



Achieving Business Integration with the most mature
Open Source Integration Platform

SOPERA ASF

March 16th 2010, Paris, Solution Linux

Marian Kuffner **Principal Consultant, SOPERA GmbH**

Agenda

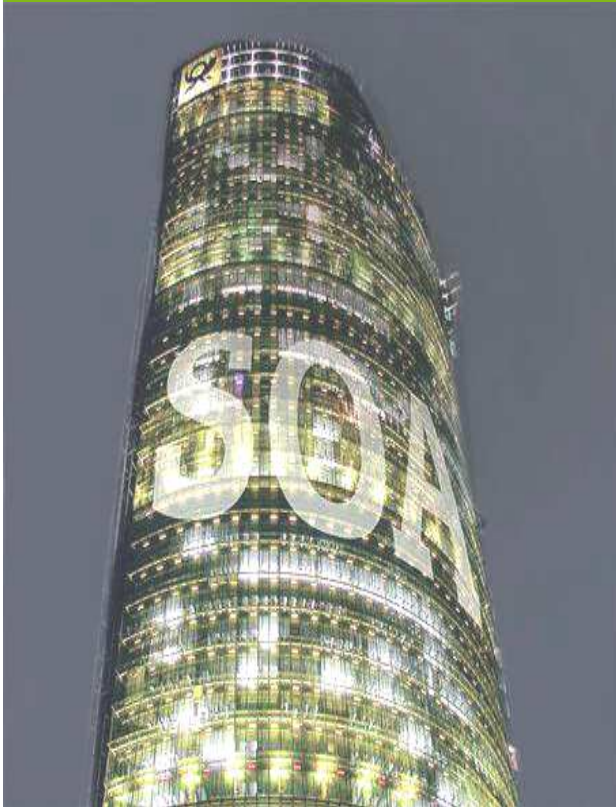


- Open Source SOA with SOPERA
- The SOPERA Advanced Services Factory
- Customer Case Studies - Best Practice and Benefits
- Questions & Answers

Company Profile SOPERA GmbH



The SOA Infrastructure of Deutsche Post / DHL



Spin off Deutsche Post / DHL

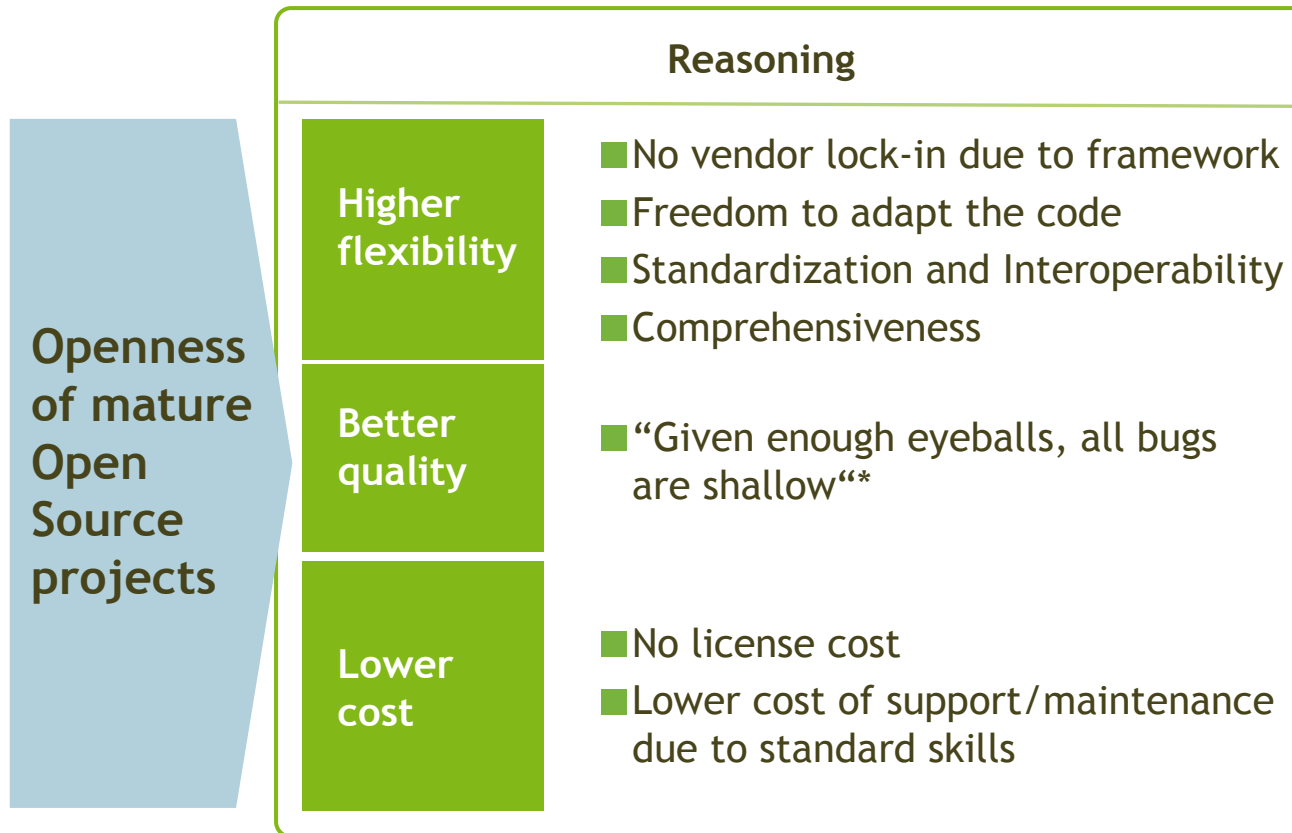
- SOA initiative and framework started in 1999
- Live since 2001
- 200+ mission critical business services with 5000+ service operations

SOPERA GmbH

- Founded 3/2007
- Privately held
- 50+ employees (2/3 development)
- Strategic Board Member of Eclipse Foundation & project lead “Swordfish”
- More than 30 customers

Winner of the
Open Source Business Award
2009

Mature Open Source Software Creates High Business Value in Enterprises



* Linus's Law according to Eric S. Raymond "The Cathedral and the Bazaar"

SOPERA is driving the Eclipse SOA Initiative



eclipseCON™ 2010
March 22nd - 25th Santa Clara, CA **On Now!**

Visit other Eclipse Sites

Google™ Custom Search Search

eclipseSOA

Eclipse SOA Platform is a runtimes and tools integration platform for SOA developers. It makes easy to get the environment you need for developing and executing SOA.

- Download**
Download the SOA Platform Package
- Getting Started**
Quick introduction how to install and use the SOA Platform Package
- SOA Initiative Consortium**
About the SOA Initiative and Participants
- Community, Support & Service**
Become part of the community. Looking for commercial services?

Initiative Members

- ENGINEERING
- beo
- SOPERA
- itemis

Home Privacy Policy Terms of Use Copyright Agent Legal Contact Us

Copyright © 2010 The Eclipse Foundation. All Rights Reserved.

SOPERA is Project Lead and develops on the cornerstone „Project Swordfish“

Agenda

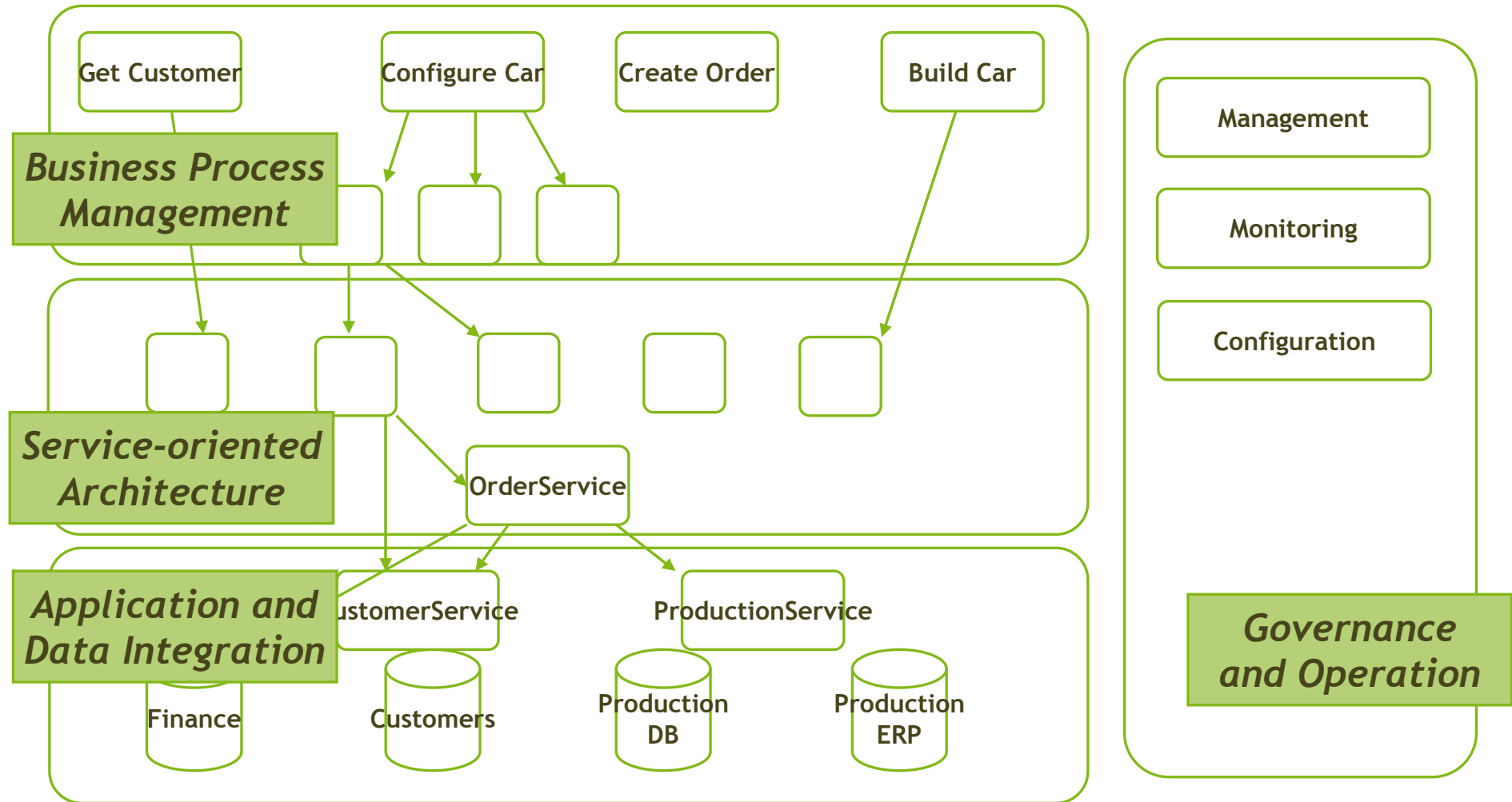


- Open Source SOA with SOPERA
- The SOPERA Advanced Services Factory
- Customer Case Studies - Best Practice and Benefits
- Questions & Answers



SOPERA

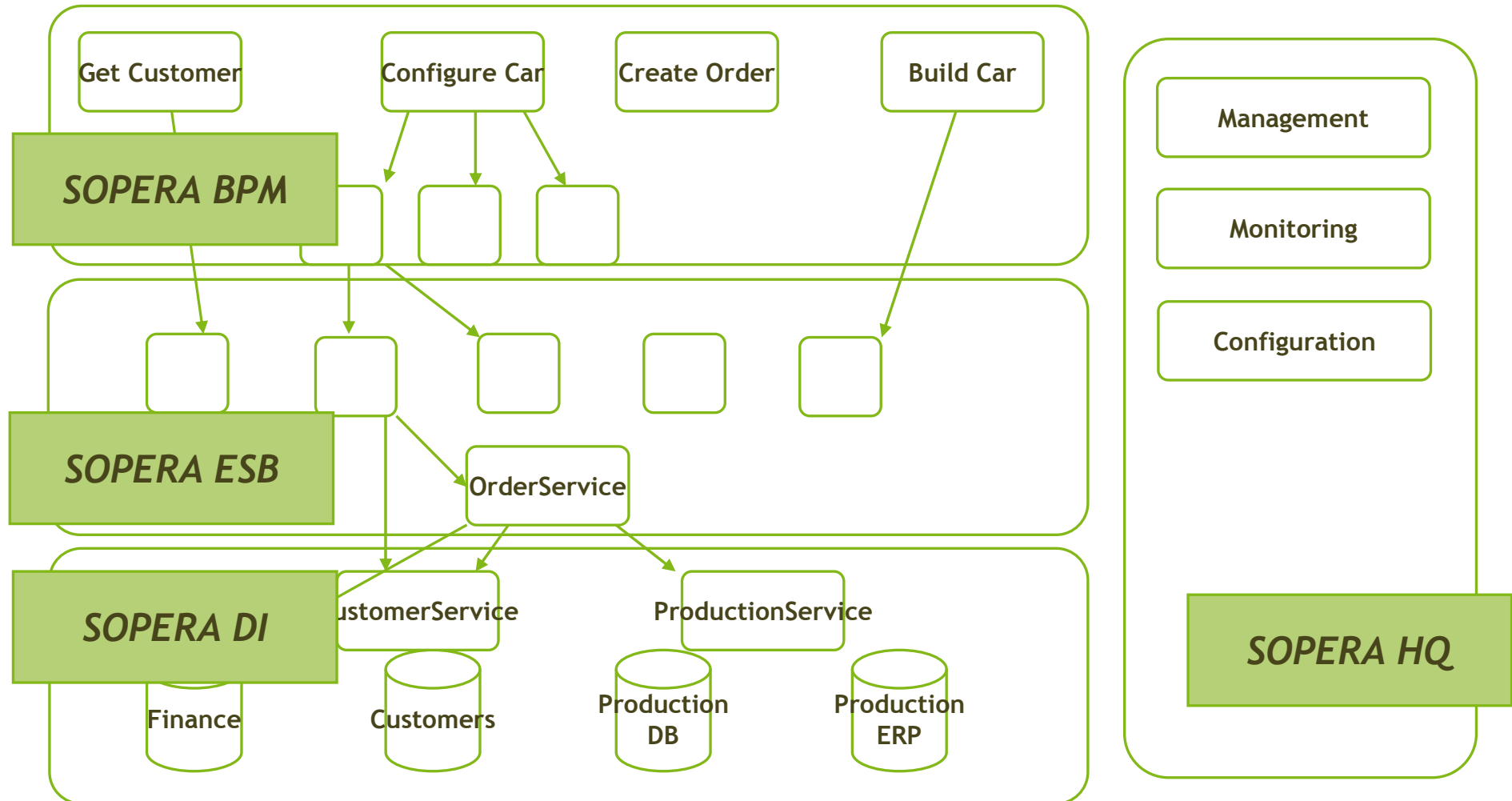
Enterprise Project Scenarios



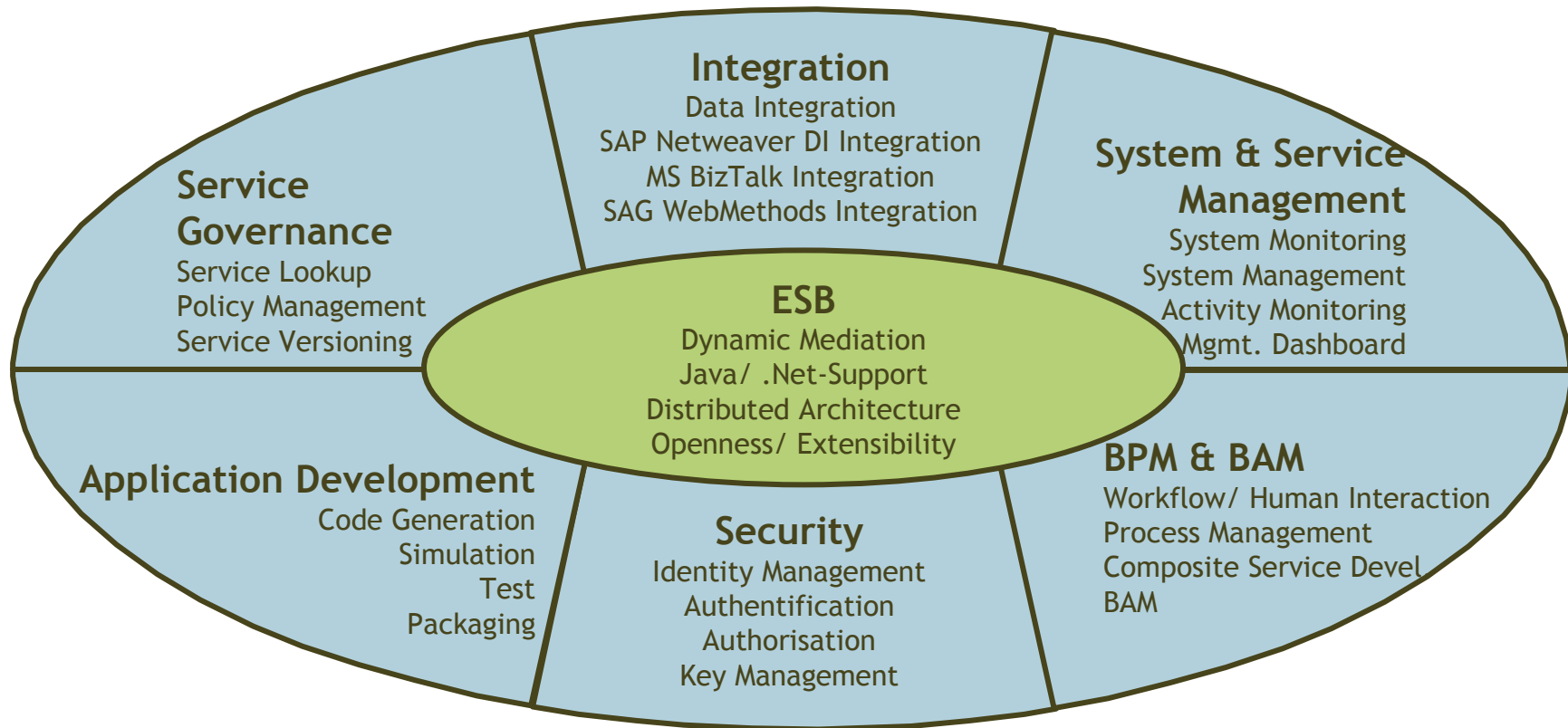


SOPERA

The SOPERA Advanced Services Factory



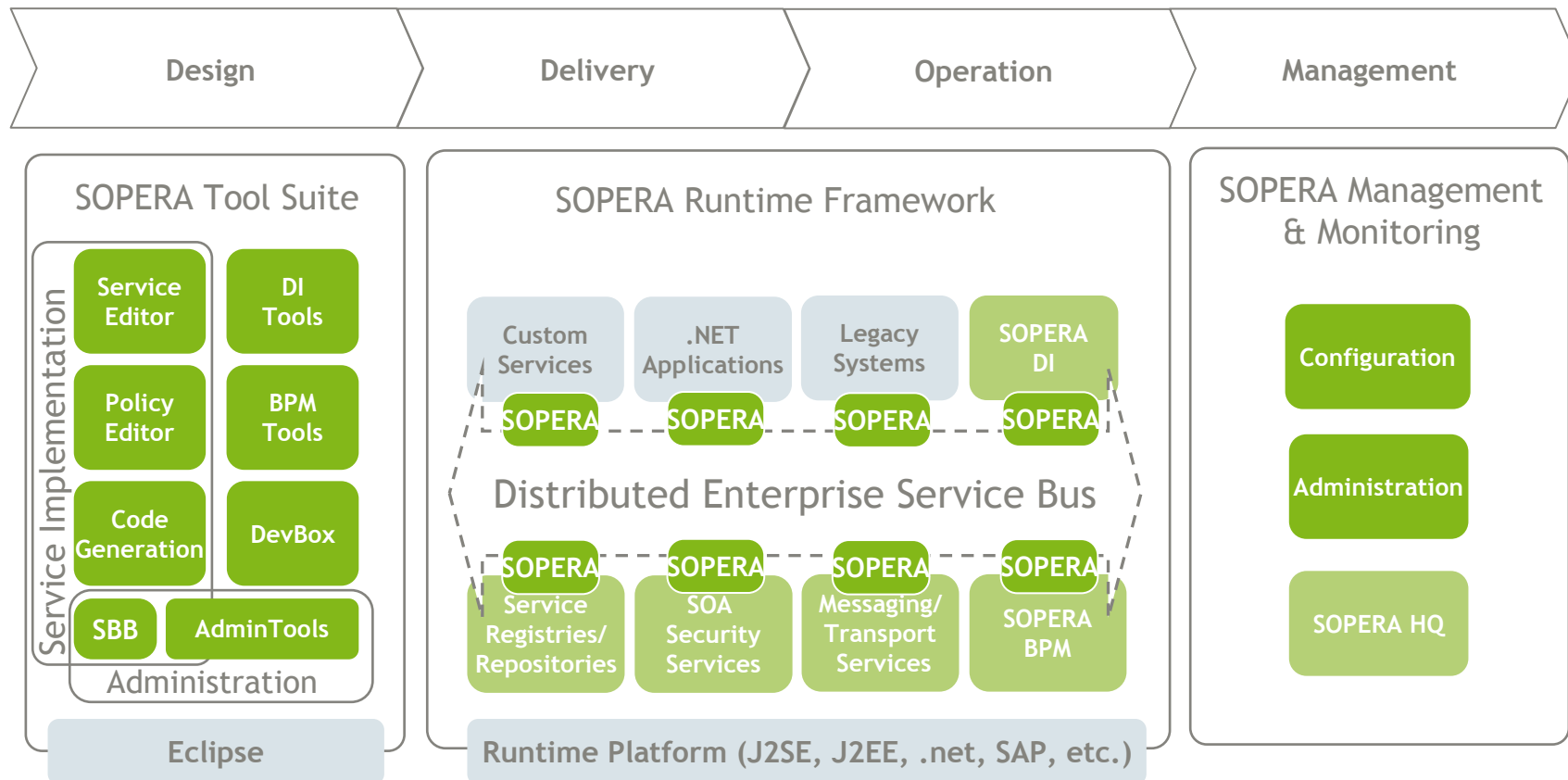
SOPERA covers all major Aspects of Enterprise Integration



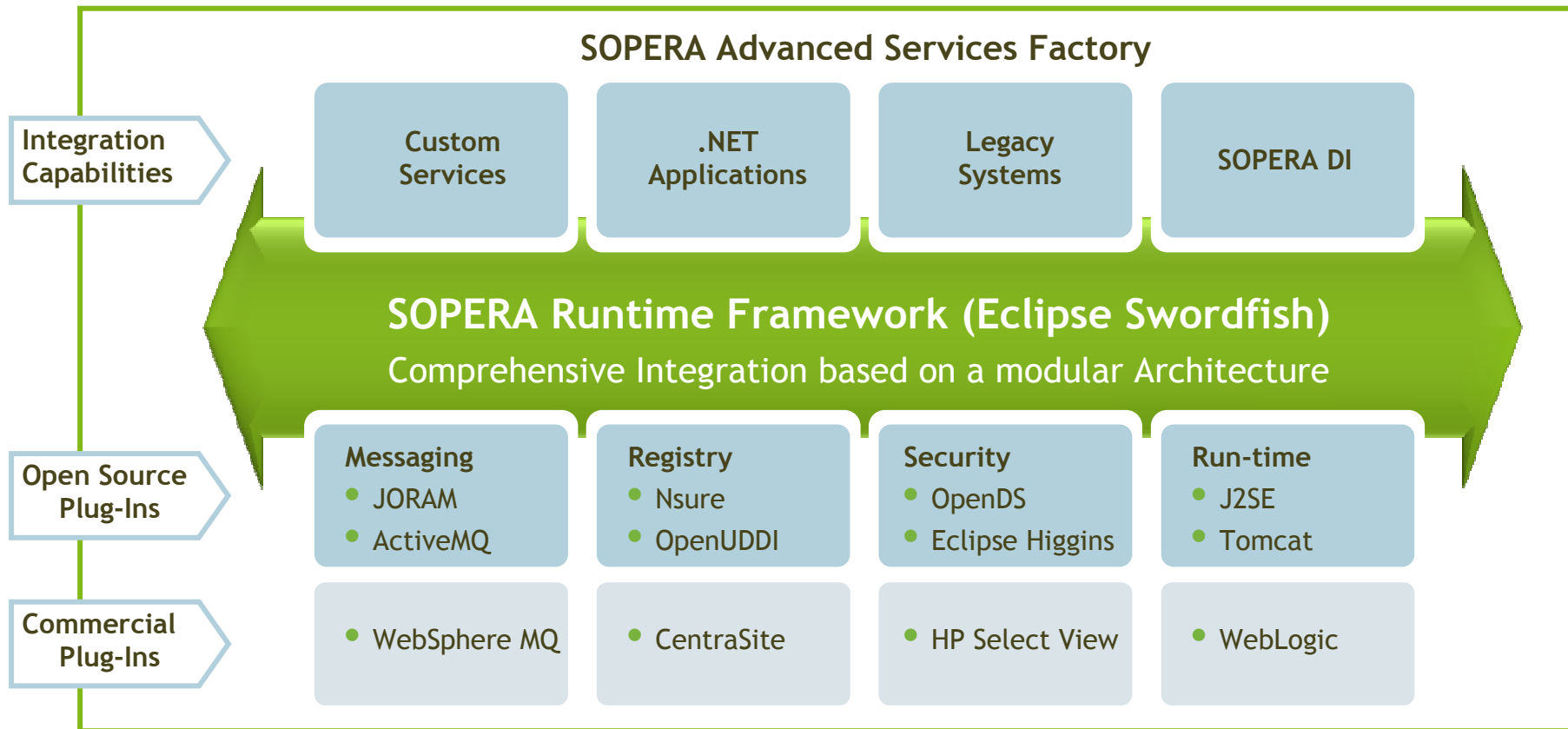
SOPERA ASF is a comprehensive SOA Suite



SOPERA Advanced Services Factory



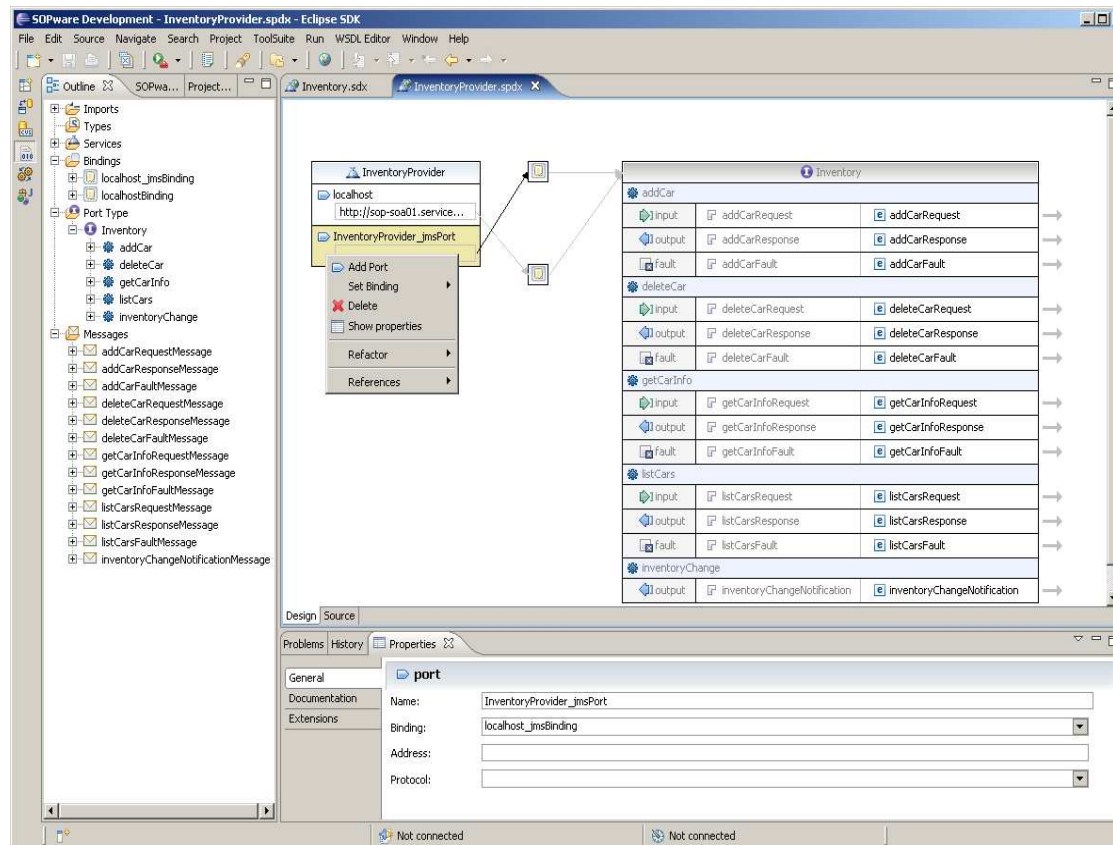
Technology and Vendor Independence



Modeling and Implementation of Services



SOPERA ESB Service Editors



Service Editor

- Service Interface
- Service Endpoint
- Quality of Service

Code Generators for

- Service Consumers
- Service Providers
- Java SE, Java EE, .NET

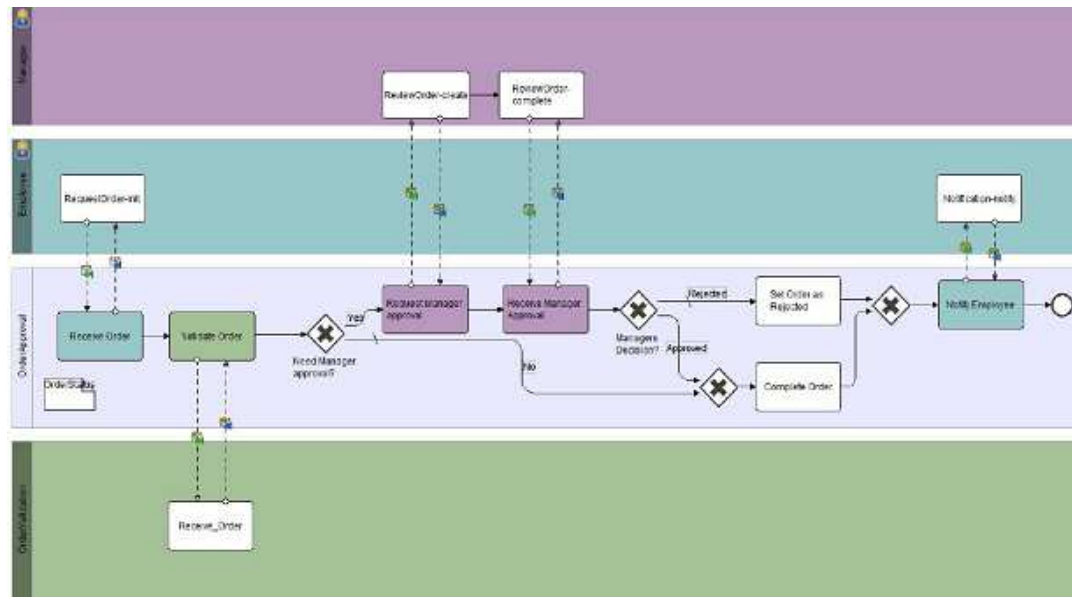
Eclipse Perspectives for

- Development
- Administration

Design and Management of Business Processes



SOPERA BPM



Process	Lifecycle	In Progress	Failure	Suspended	Failed	Terminated	Completed	Total
<input type="checkbox"/> AbsenceRequest [v1]								
<input type="checkbox"/> AbsenceRequest	ACTIVE	-	-	-	-	-	-	-
<input type="checkbox"/> HelloWorld [v2]								
<input type="checkbox"/> HelloWorld:HelloWorld	ACTIVE	-	-	-	-	-	-	-
<input type="checkbox"/> OrderApproval_Step7_Notify [v5]								
<input type="checkbox"/> OrderApproval:OrderApproval	RETIRED	1	-	-	-	-	-	1
<input type="checkbox"/> OrderValidation:OrderValidation	RETIRED	-	-	-	1	-	-	1

Model Business Processes

- Design in BPMN
- Workflow Forms
- Data Transformation
- Service Invocations
- “Zero-Code”

Run-time

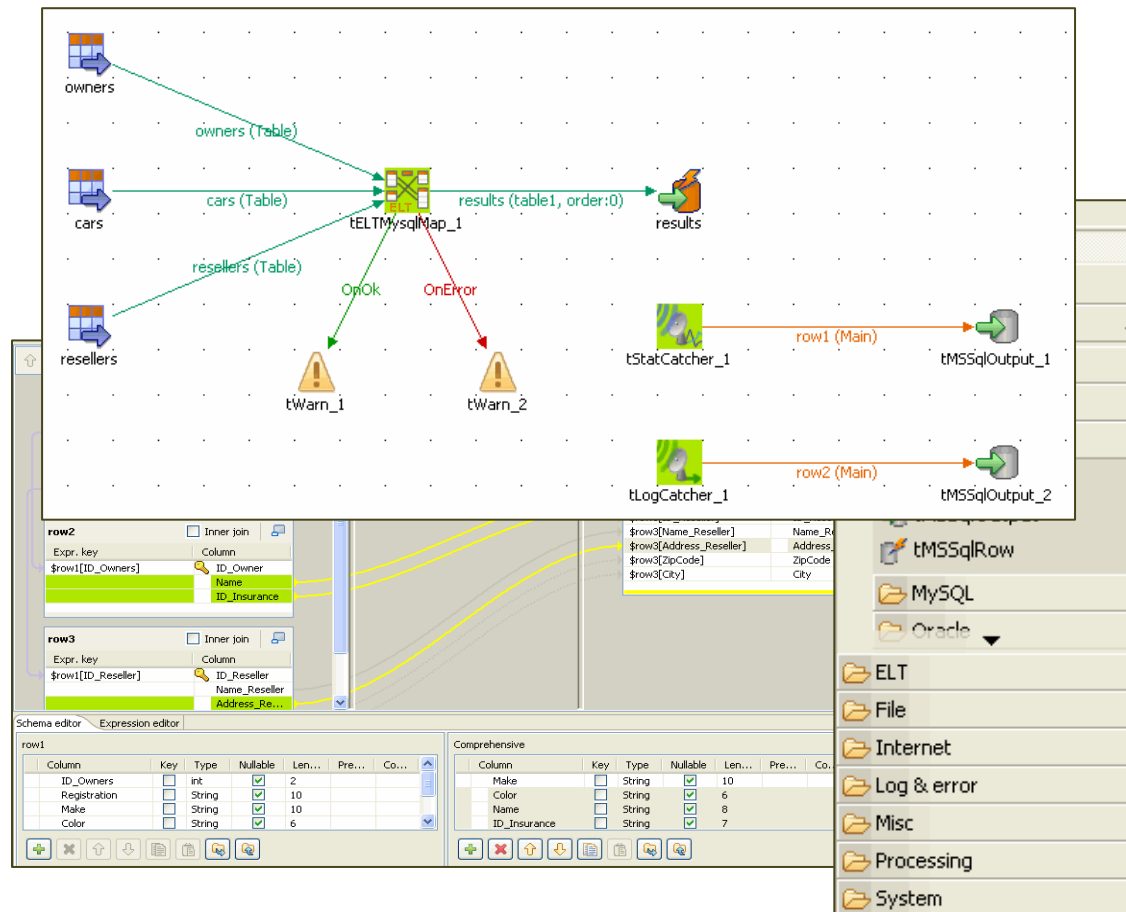
- BPEL
- Workflow Applications

Track and Watch

- Process Definitions
- Process Instances
- Exchanged Messages

Integration of Legacy Systems

SOPERA DI



Integration Jobs

- Attach Backend Systems
- 250+ Adapters
- Mapping Rules Editor
- Real-time Debugging
- “Drag-and-Drop”

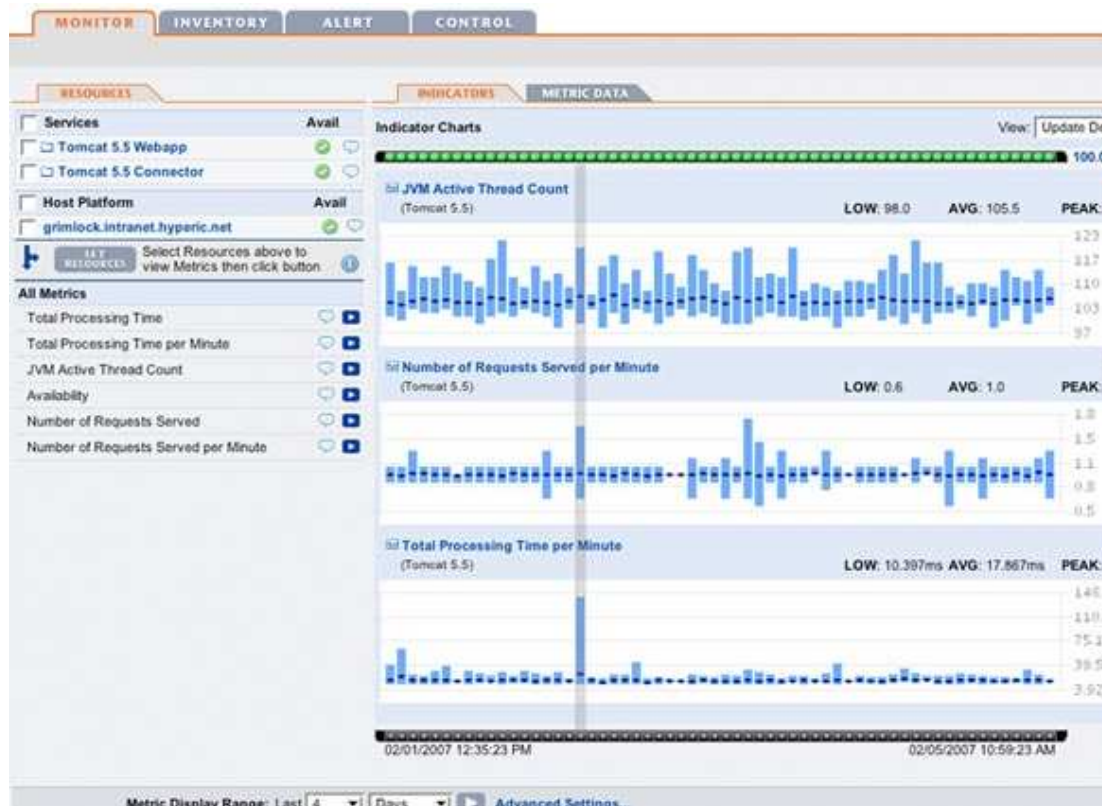
Run-time

- Exposed as Services
- Attached to the ESB
- Plain Old Java Classes
- Distributable

Management and Monitoring of Services



SOPERA HQ



Full Insight

- 70+ Technologies
- Detailed Metrics
- Charting & Reporting
- Enterprise-ready

Proactive

- Alerting & Notification
- Escalation Management
- Control Actions
- Reporting

Easy to use

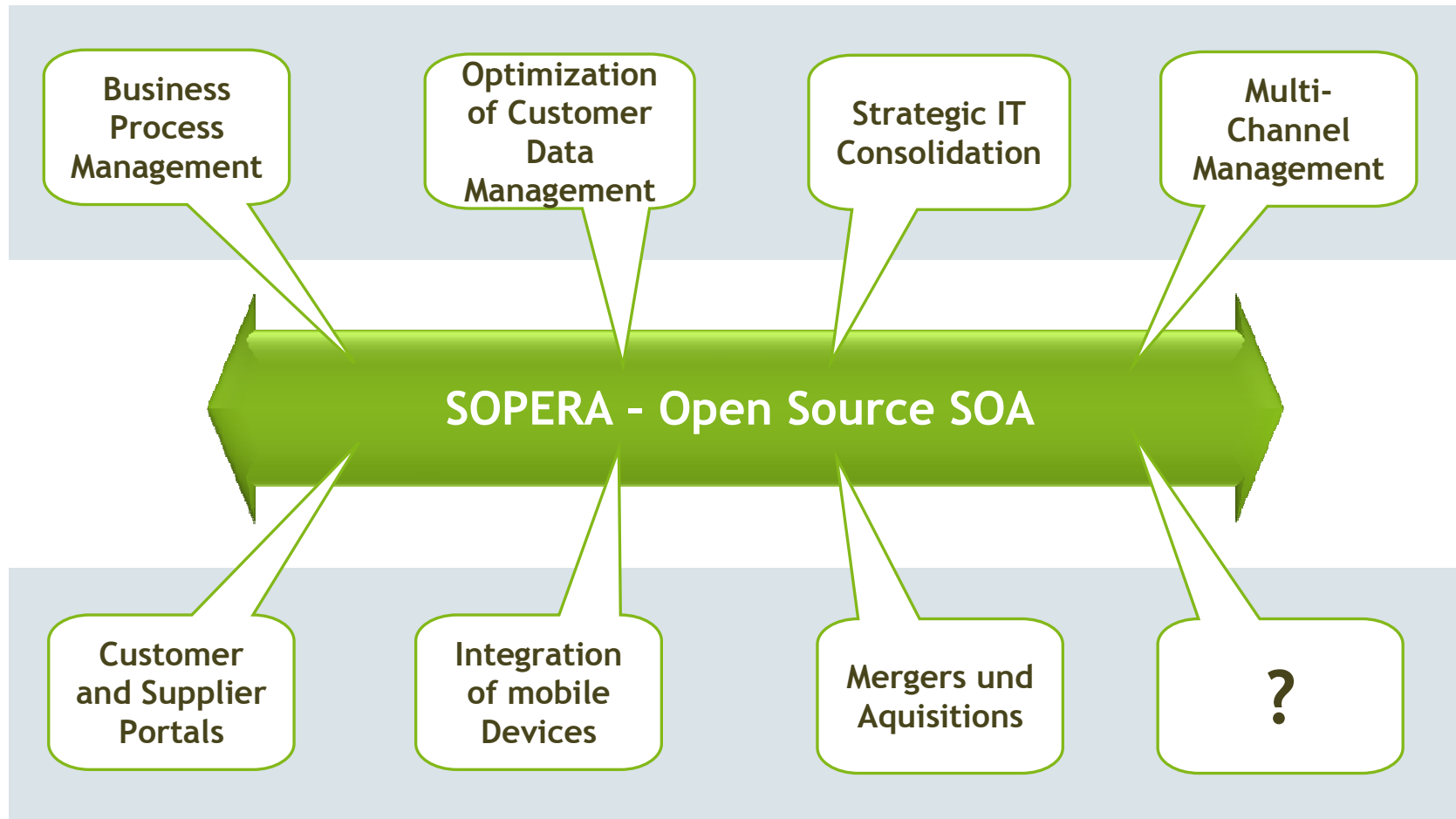
- Auto-discovery
- Drill-down
- Consolidates point solutions

Agenda



- Open Source SOA with SOPERA
- The SOPERA Advanced Services Factory
- Customer Case Studies - Best Practice and Benefits
- Questions & Answers

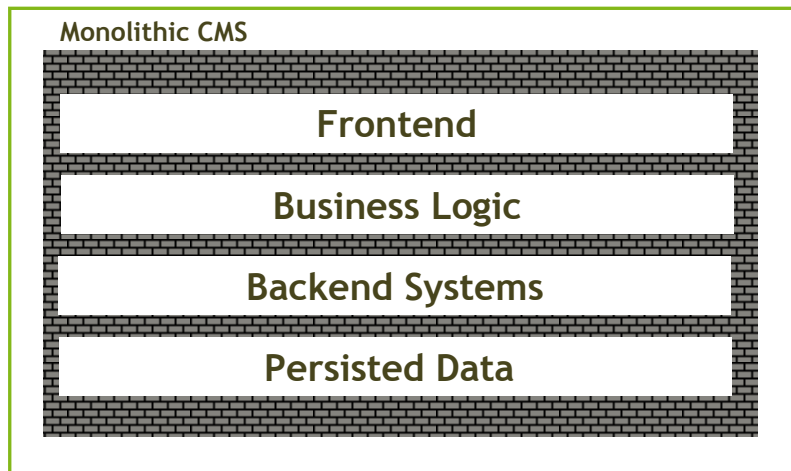
SOPERA ASF: One Integration Platform... for many Solutions...



Customer Case Study: Consolidation of the Portal of a Media Company

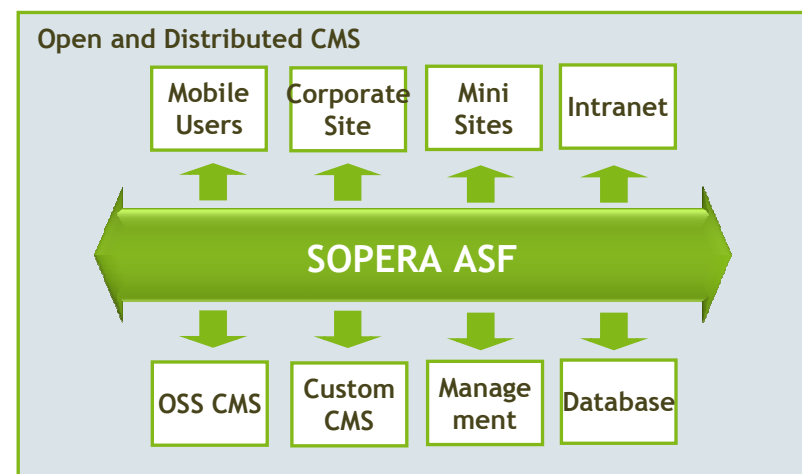


Challenge



- High License and Development Costs
- Inflexibility to address new Requirements
- Outdated Technologies

Solution

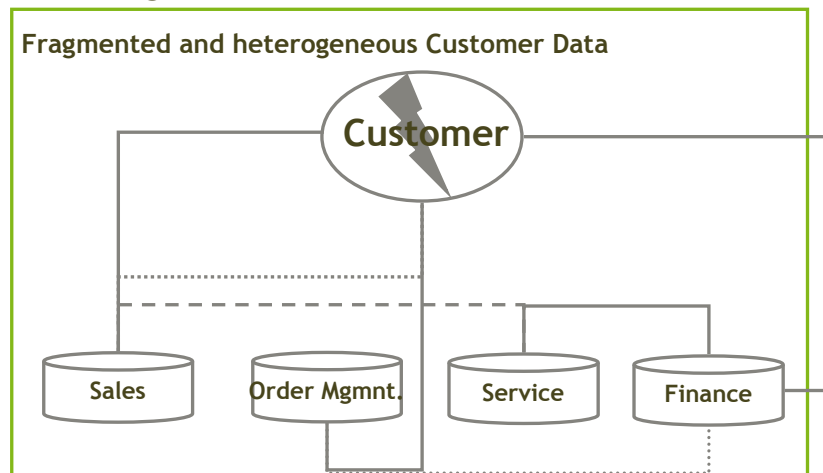


- + Best-of-Breed Concept provides flexibility
- + Standardized Architecture
- + Transparent Integration of Legacy Systems
- + Less Costs

Customer Case Study: Optimized Management of Customer Data at a large Logistics Supplier

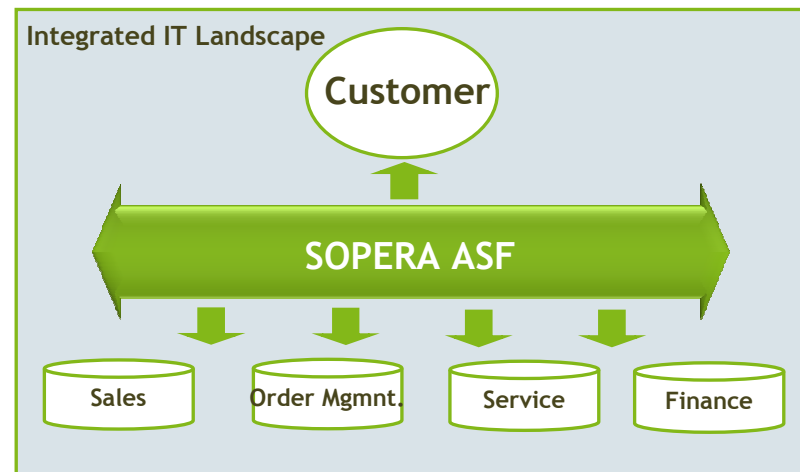


Challenge



- No 360°-View on the Customer
- Lacking the ability to provide best service
- High Costs through occurring Changes

Solution

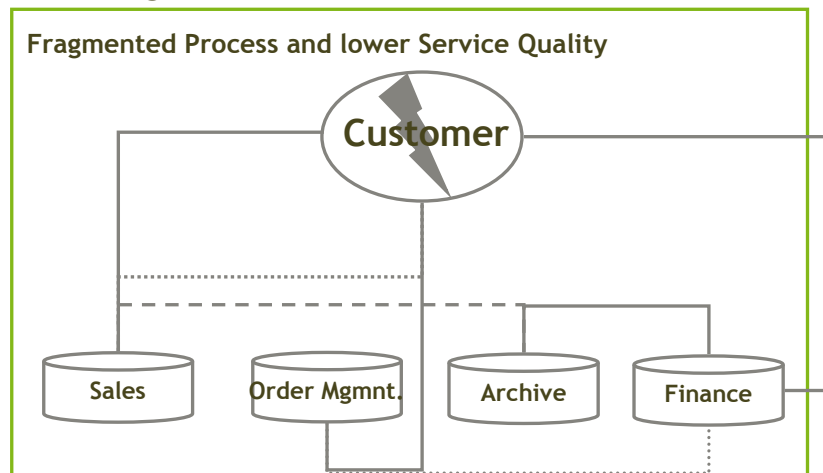


- + Consistent Customer Data enterprise-wide
- + Integration and Encapsulation of Legacy Systems
- + Flexibility to quickly address changes
- + Cost reduction

Customer Case Study: Increased Customer Satisfaction through optimized and automated Business Processes at an Insurance Company

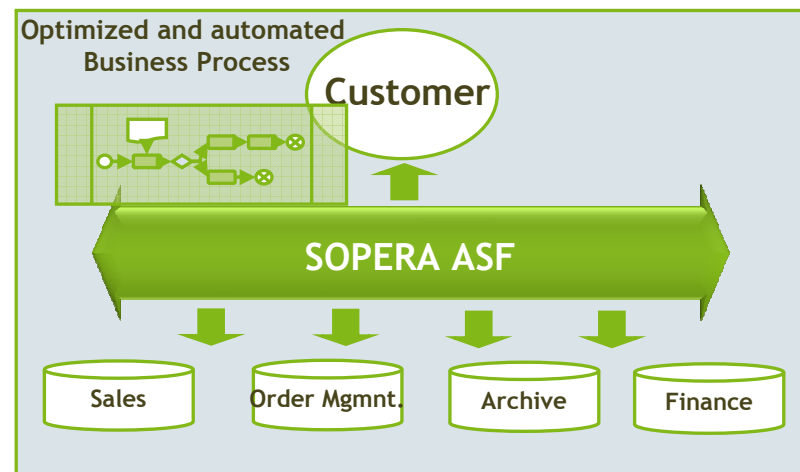


Challenge



- Low Throughput of Policy Requests
- Fragmented Process takes too long
- Unsatisfied Customers and Partners

Solution



- + Higher Troughput through optimized automation
- + Free high-skilled Professionals for other tasks
- + Increased Service Quality
- + Increased Service Levels for Partners

Questions ?



...
Merci beaucoup !

Come to our booth and see SOPERA live!
Looking forward to meeting you at our booth B19.

A business card for Marian Kuffner, Principal Consultant at SOPERA. The card has a green header and footer with the SOPERA logo and "OpenSource SOA" text. The main body is white with contact information.

Marian Kuffner
Principal Consultant

Location: München, Germany

Phone: +49 (0)89 – 944 02 7523
Mobile: +49 172 – 29 26 027
Fax: +49 (0)89 – 944 02 7519
E-mail: armin.wallrab@sopera.de